



G3 Ultra

Premium Abrasive Compound



Product Description

G3 Ultra Premium Abrasive Compound offers unbeatable speed and quality of finish, permanently removing P1500 or finer sanding marks from all modern paint systems.

G3 Ultra is ideally applied using a Farécla G Mop 6" Yellow Compounding Foam (**GMC612**). The pad was engineered in tandem with the compound to provide a marked performance improvement versus other pads.

For best results, follow by polishing with G3 Fine Finishing Compound (**G3F101**) and a G Mop 6" Finishing Foam (**GMF601**).



Product Information

Size	Code	Ctn Qty
500g	G3U501	12
1kg	G3U130	6

Key Benefits

• Fastest Ever Cutting Action	Unbeatable speed to permanently remove P1500 or finer sanding marks
• Permanent Gloss Finish	Provides superb final finish shine in one step for the majority of jobs*. Scratches are permanently removed leaving a superior gloss finish
• Superior Emulsion System	Increased lubrication allows compound to work for longer without drying out
• Clean in Use	Throw off is minimised with surface residue kept lubricated for easy wipe off
• Silicone Free, Low VOC Content and User Safe	Water-based (non-petroleum) formulation is safe in contact with skin

*One step refers to the repair of lighter coloured paints.



Use With

Primary Application



G Mop 6" Yellow
Compounding Foam
GMC612



G Mop Back Plate with
White Interface for
6" Pads
BPI601 (14mm thread)
BPI606 (16mm thread)
BPI612 (5/8" thread)



Farécla Finishing Cloth
FC-3 (3 x cloths)

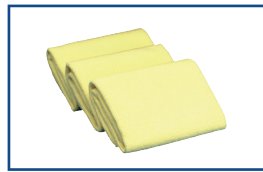


Spurring Brush
1090005

Small Repair Application



G Mop 3" Yellow
Compounding Pad
GMC312

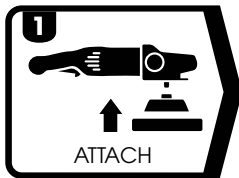


Farécla Finishing Cloth
FC-3 (3 x cloths)

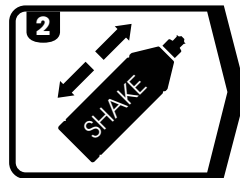


Spurring Brush
1090005

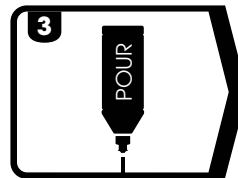
How To Use



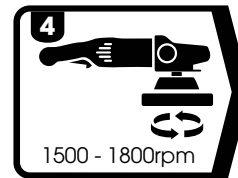
1
ATTACH
Attach a G Mop
Back Plate and
G Mop 6" Yellow
Compounding
Foam to machine



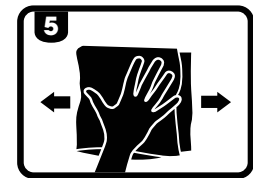
2
SHAKE
Shake bottle well
before use



3
POUR
Dispense a small
quantity of
product onto
surface or pad



4
1500 - 1800rpm
Compound at
1500 - 1800rpm



5
Wipe clean with
Finishing Cloth

Technical Information

Appearance: **White coloured liquid**
Viscosity: **Medium - Highly viscous**
VOC Content: **266g/L**
Relative Density: **1.15**
pH: **7 (approx.)**
Paint Type Compliance: **HS & UHS (SRC)**

Tip

Prior to first use of a new pad, roughen the surface with a Spurring Brush to ensure optimum results. Clean pad with the Spurring Brush after use.